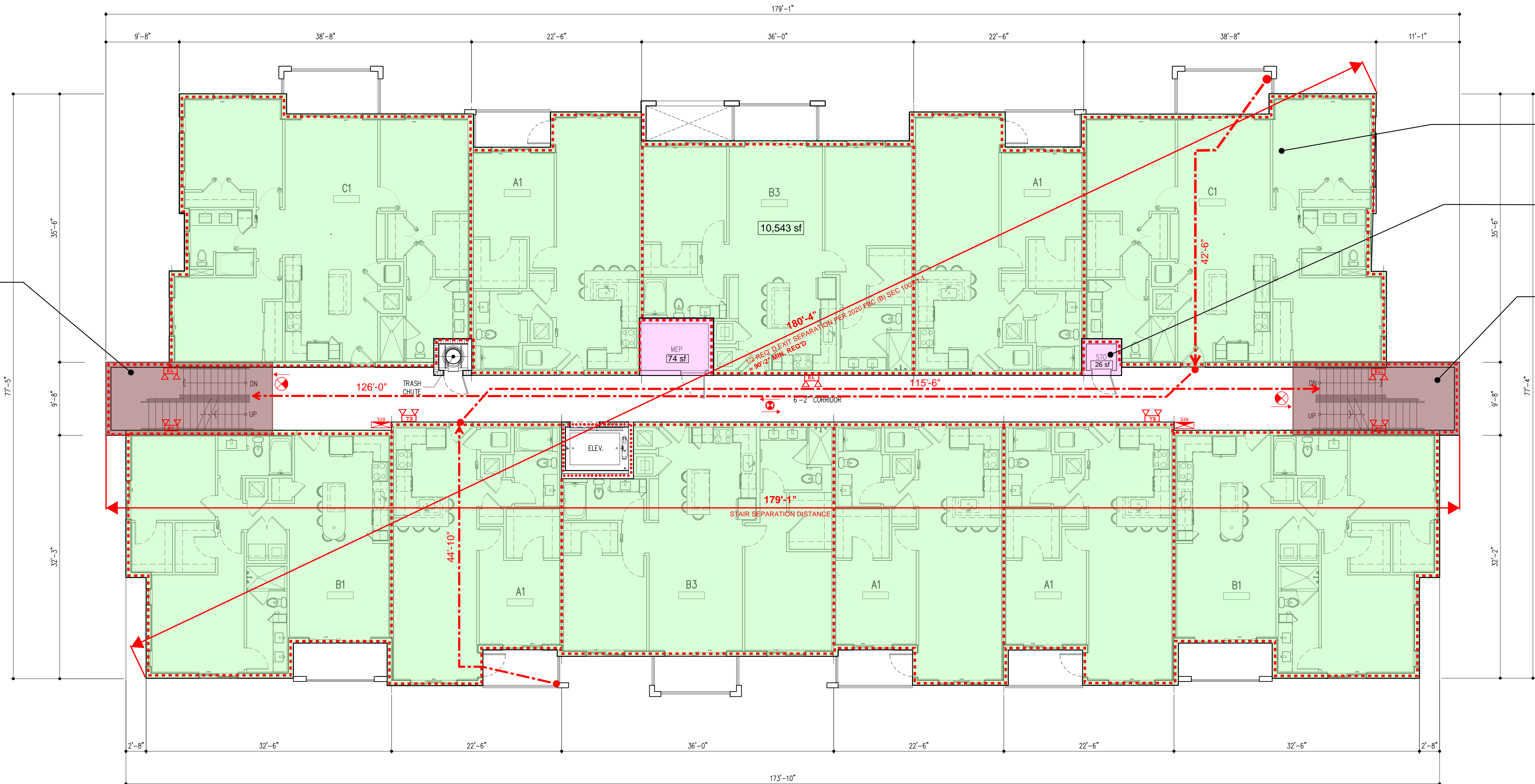


STAIR No. # 1	
EGRESS CAPACITY FACTOR: 0.3	
147 OCCP.	44" STAIR

STAIR No. # 1 - DOOR	
EGRESS CAPACITY FACTOR: 0.2	
180 OCCP.	36" OPENING



R-2 OCCUPANCY
NEW APARTMENTS 10,543 SF @ 200 SF PER OCCUP.
= 53 OCCUP.

STORAGE
STO 26 SF @ 300 SF = 1 OCCUP.
MEP 74 SF @ 300 SF = 1 OCCUP.
2 OCCUP.

STAIR No. # 2	
EGRESS CAPACITY FACTOR: 0.3	
147 OCCP.	44" STAIR

STAIR No. # 2 - DOOR	
EGRESS CAPACITY FACTOR: 0.2	
180 OCCP.	36" OPENING

LIFE SAFETY PLAN LEGEND	
	TRAVEL DISTANCE (200 FT PROTECTED W/ AUTOMATIC FIRE SPRINKLERS)
	S.F.E. SURFACE FIRE EXTINGUISHER
	S.F.E. SURFACE FIRE EXTINGUISHER (IN CABINET)
	R.F.E. RECESSED FIRE EXTINGUISHER-2A-10 (IN RATED CABINET) @ 75'-0" TRAVEL MAX.
	POINT OF EXIT DISCHARGE, EXIT, DESIGNATION OF EXIT WIDTH
	EXIT SIGN - SPACED 100'-0" MAX. VIEWING DISTANCE PER FBC 1006.3.2 (SHADED AREA INDICATES ILLUMINATED SIGN FACE)
	FIRE HOSE VALVE CONNECTION.
	EMERGENCY LIGHT W/ BATTERY PACK
	20-MIN. RATED DOOR REFER TO DOOR SCHEDULE
	3/4-HOUR (45-MIN.) RATED DOOR REFER TO DOOR SCHEDULE
	1-1/2-HOUR (90-MIN.) RATED DOOR REFER TO DOOR SCHEDULE
FIRE RATED SEPARATIONS	
	1HR. RATED BUT NOT LESS THAN REQUIRED BY TABLE 601 OF THE FBC
	2HR. RATED BUT NOT LESS THAN REQUIRED BY TABLE 601 OF THE FBC
	3HR. RATED BUT NOT LESS THAN REQUIRED BY TABLE 601 OF THE FBC

NOTE: FIRE RATINGS SHOWN ON LIFE SAFETY PLANS ARE FIRE SEPARATION REQUIREMENTS AS PER THE FBC AND NFPA 101. REFER TO FBC TABLE 601, "FIRE-RESISTANCE RATING REQUIREMENTS FOR BUILDING ELEMENTS" FOR FIRE RATING REQUIREMENTS OF STRUCTURAL ELEMENTS. REFER TO STRUCTURAL DRAWINGS FOR LOCATION OF ALL STRUCTURAL ELEMENTS.

- ACCESSIBLE MEANS OF EGRESS**
- THERE WILL BE A MAXIMUM OF 1/2" CHANGE IN ELEVATION AT EXIT DOOR THRESHOLDS.
 - ALL WALKWAYS LEADING TO PUBLIC WAY SHALL HAVE A SLOPE NOT GREATER THAN 1:20
 - THE FLOOR ON EACH SIDE OF DOORS IN A MEAN OF EGRESS SHALL BE LEVEL AT LEAST WITHIN THE REQUIRED MANEUVERING CLEARANCES AT EACH SIDE OF THE DOOR.

- BUILDING SIGNAGE**
- PROVIDE RESIDENTIAL BUILDING ADDRESS SIGN(S) IN CONTRASTING COLOR, 10" MIN. IN HEIGHT. REFER TO LS-LIFE SAFETY FLOOR PLAN(S) (THIS SHEET) AND BUILDING ELEVATION SERIES "3" SHEETS FOR LOCATION AND FURTHER REFERENCE.
- PROVIDE RESIDENTIAL UNIT NUMBER SIGN(S) WITH MIN '3' LETTERS. PROVIDED SIGN ADJACENT TO EACH UNIT ENTRY DOOR @ 72" A.F.F.

PROVIDE PLACARD FOR LIGHT FRAME ROOF, AS PER FLORIDA STATE RULE 69A-60.0081.FOR REQUIRED FIREFIGHTER WARNING SIGNS.

BUILDING PUBLIC SAFETY RADIO ENHANCEMENT SYSTEMS SHALL COMPLY WITH NFPA 72 (2013ED) 24.5.2 AND 14.4.10 NFPA (2015ED) 11.10. POMPANO BEACH FIRE DEPT. REQUIREMENTS AND MUST BE TIED TO FACP.

LEVEL 2
11 UNITS

LIFE SAFETY - BLDG TYPE P&Z
5 STORY/54 DU'S SCALE: 1/8" = 1'-0"

PZ23-12000017
06-25-2025

MSA ARCHITECTS, INC.
AAC000895
8950 SW 74th COURT
SUITE 1513
MIAMI, FLORIDA 33156
(305) 273-9911

MSA ARCHITECTS
ARCHITECTURE & PLANNING

MSA ARCHITECTS, INC.
8950 SW 74th COURT
SUITE 1513
MIAMI, FLORIDA 33156
(305) 273-9911

DRAWN	CONTRACT DATE	10/12/22
SCALE	AS SHOWN	
JOB NO.	2181.PRJ	
SHEET TITLE:		
BUILDING TYPE I		
SHEET NUMBER:		
LS-A-2.1.2		

FOR:
MORGUARD
LOCATED AT:
POMPANO BEACH, FLORIDA

JOSE L. SAUMELL
AR0013085

OAKS @ PALM AIRE

PRE-APP MEETING 04/04/2023	
DRC SUBMITTAL 06/13/2023	
DRC RE-SUBMITTAL 08/16/2023	
DRC RE-SUBMITTAL 01/01/2024	
DRC RE-SUBMITTAL 10/16/2024	
DRC RE-SUBMITTAL 12/10/2024	

ARCHITECT'S BUILDING CODE STATEMENT/ TO THE BEST OF THE ARCHITECT'S KNOWLEDGE, THE PLANS AND SPECIFICATIONS COMPLY WITH THE FLORIDA BUILDING CODE SEVENTH EDITION (2020) AND THE APPLICABLE FIRE SAFETY STANDARDS AS DETERMINED BY THE LOCAL AUTHORITY AND CHAPTER 633, FLORIDA STATUTES.

THIS DOCUMENT IS THE PROPERTY OF MSA ARCHITECTS, INC. AND IS NOT TO BE REPRODUCED, COPIED, OR DISTRIBUTED IN ANY MANNER WITHOUT THE WRITTEN PERMISSION OF MSA ARCHITECTS, INC. THE BUILDING AND/OR OVERALL PROJECT ARE THE LEGAL PROPERTY OF AND ALL RIGHTS ARE RESERVED BY THE ARCHITECT.